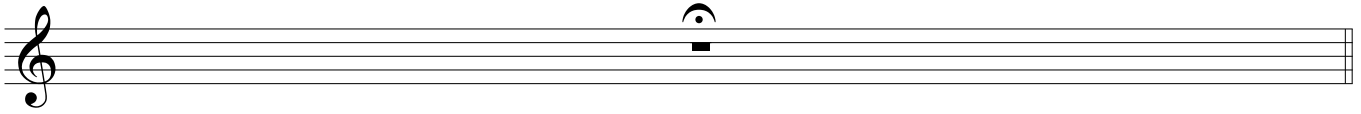


# Sparks and Feathers

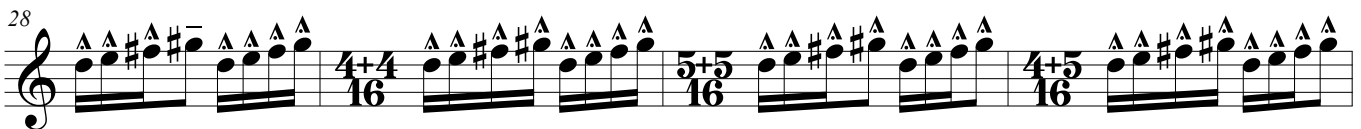
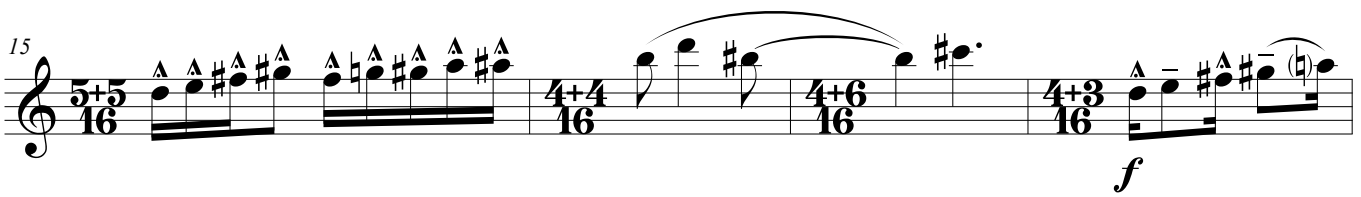
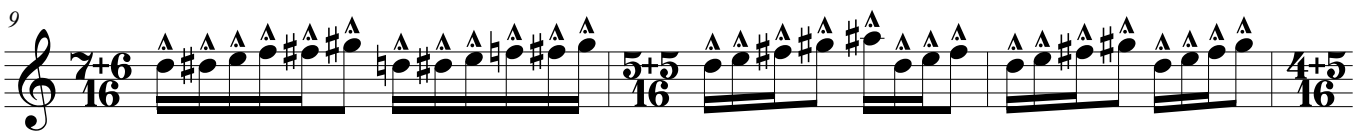
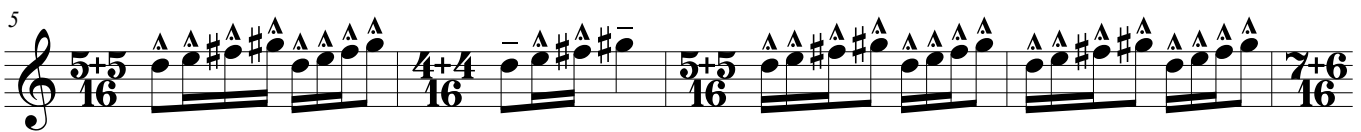
for violin and interactive computer

Lars Graugaard  
composed 2010  
premiered by Patti Kilroy

1



Lightly (♩+♩.=90)



32

36

41

44

47

②

53

55

58

61

65  $\frac{4+5}{16}$   $\frac{5+5}{16}$   $\frac{5+4}{16}$

68  $\frac{5+4}{16}$   $\frac{4+3}{16}$

72  $\frac{4+3}{16}$   $\frac{2+3}{16}$   $\frac{4+3}{16}$   $\frac{2+3}{16}$   $\frac{4+2}{16}$   $\frac{4+4}{16}$

77  $\frac{4+4}{16}$   $\frac{6}{16}$   $\frac{4+4}{16}$   $\frac{6}{16}$   $\frac{4+4}{16}$

82  $\frac{6}{16}$   $\frac{4+4}{16}$   $\frac{4+6}{16}$   $\frac{4}{4}$

87  $\frac{4}{4}$   $\frac{3}{4}$   $\frac{2}{4}$   $\frac{3}{8}$

93  $\frac{3}{8}$   $\frac{4}{8}$   $\frac{3}{8}$   $\frac{4}{8}$   $\frac{4+5}{16}$

99  $\frac{3+5}{16}$   $\frac{4+6}{16}$   $\frac{4+4}{16}$

103  $\frac{4+4}{16}$   $\frac{4+6}{16}$   $\frac{6+7}{16}$   $\frac{6+6}{16}$

106  $\frac{6+6}{16}$   $\frac{4+5}{16}$   $\frac{4+4}{16}$

*mp*

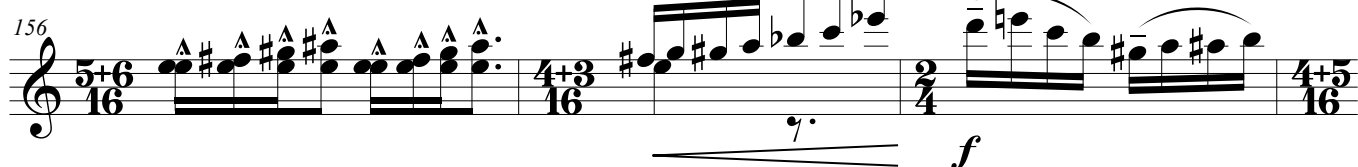


144 

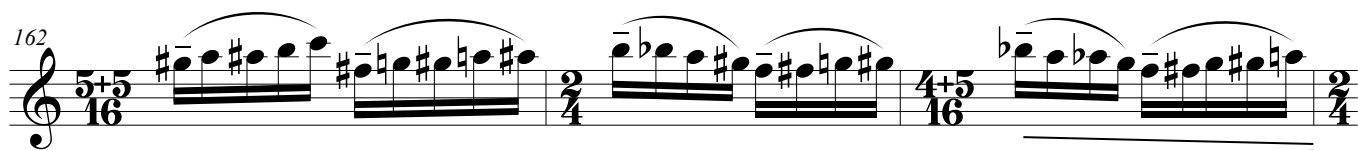
147 

150 

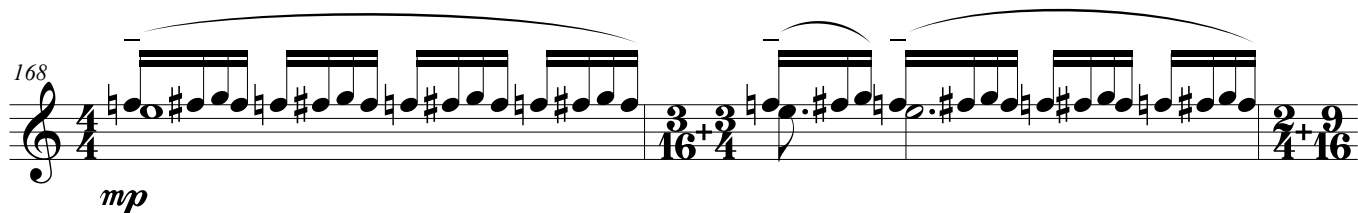
153   
*mf*

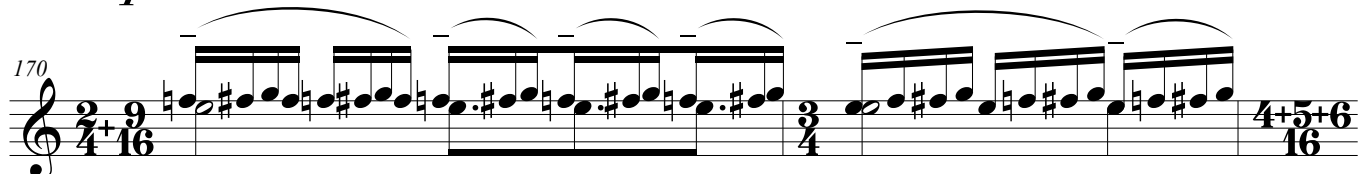
156   
*f*

159 

162 

165 

168   
*mp*

170 

## Sparks and Feathers

172  $\frac{4+5+6}{16}$   $\frac{4}{4}$   $\frac{4+5+6}{16}$

174  $\frac{4+5+6}{16}$   $\frac{9}{16}$

176

179  $\frac{4+5}{16}$   $\frac{6+6}{16}$

182  $\frac{6+6}{16}$   $\frac{7+7+7}{16}$

183  $\frac{7+7+7}{16}$   $\frac{6}{16}$   $\frac{7+7}{16}$

185  $\frac{7+7}{16}$   $\frac{6}{16}$

187  $\frac{6}{16}$   $\frac{7+7}{16}$   $\frac{6}{16}$   $\frac{5+5}{16}$

190  $\frac{5+5}{16}$   $\frac{6}{16}$   $\frac{5+5}{16}$

193  $\frac{3}{4}$   $p$   $5$

196

199

203

6 Heavy, ♩ = 84

209

214

218

222

226

231

235 *mf* *mf*

239 *mf*

243 *mf*

247 *mf*

251 *mf*

255 *mf* *f*

260 *f*

266 *f*

272 *mp*

277 *mp*



282 *rit.*  $\text{♩} = 46$  Sad,  $\text{♩} = 92$

pppp < ppp pppp < ppp

Detailed description: This staff contains measures 282 to 286. It begins with a treble clef and a 3/4 time signature. The music features a melodic line with various intervals and rests. Above the staff, there is a 'rit.' marking and a tempo change from 46 to 92. The staff changes to 4/4, then 3/4, and back to 4/4. Dynamic markings include pppp and ppp with hairpins. There are also some 8-measure rests indicated by a large '8' and a brace.

287

pppp < ppp pppp pizz. ppp

Detailed description: This staff contains measures 287 to 290. It continues the melodic line from the previous staff. The time signature changes to 4/4, then 3/4, and back to 4/4. Dynamic markings include pppp, ppp, and ppp with hairpins. A 'pizz.' marking is present. The staff ends with a double bar line.

291

ppp f

Detailed description: This staff contains measures 291 to 295. It features a melodic line with a dynamic shift from ppp to f. The time signature changes to 3/4, then 4/4, and back to 3/4. The staff ends with a double bar line.

7 ppp

mf

Detailed description: This staff contains measures 296 to 299. It features a rhythmic pattern of eighth notes with a dynamic marking of ppp at the beginning and mf below. The staff ends with a double bar line.

300

mp

Detailed description: This staff contains measures 300 to 303. It continues the rhythmic pattern of eighth notes with a dynamic marking of mp. The staff ends with a double bar line.

304

f

Detailed description: This staff contains measures 304 to 307. It continues the rhythmic pattern of eighth notes with a dynamic marking of f. The staff ends with a double bar line.

308

mf

Detailed description: This staff contains measures 308 to 312. It continues the rhythmic pattern of eighth notes with a dynamic marking of mf. The staff ends with a double bar line.

313

Detailed description: This staff contains measures 313 to 316. It is mostly empty, with a few notes and rests, and ends with a double bar line.